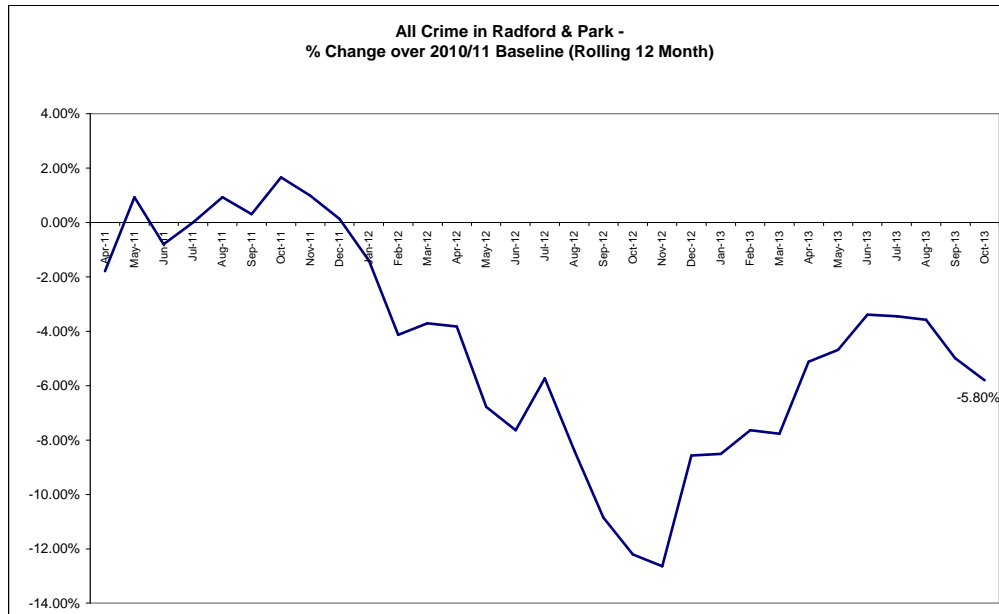


Radford and Park

Unofficial October 2013 Data

Crime

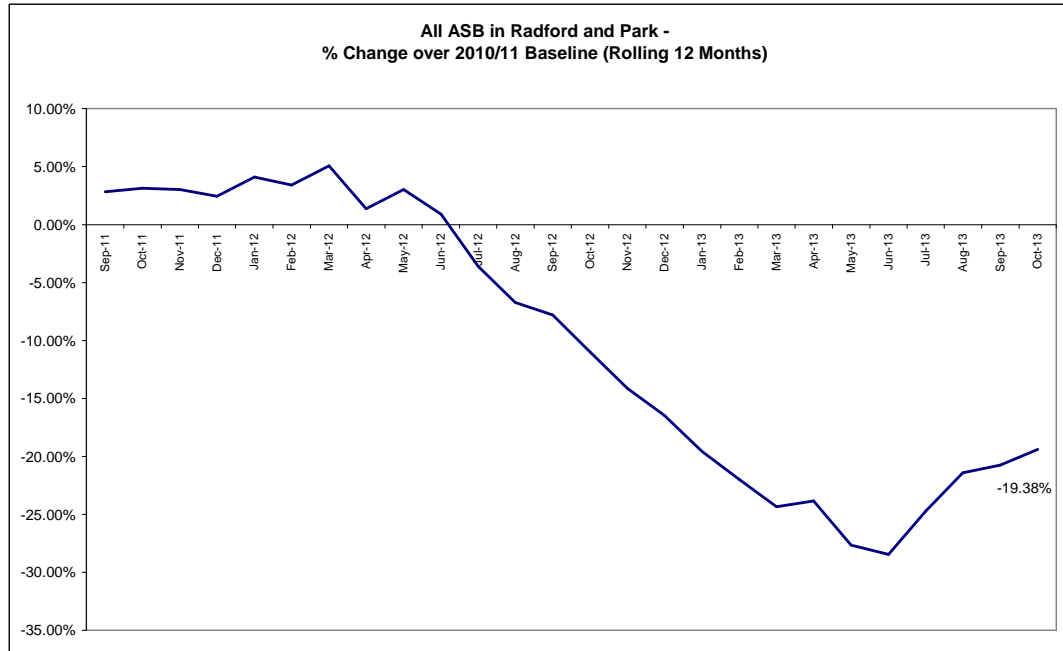


Red		
Amber		
Green	13 fewer crimes	-8.78%

*Refers to October 2013 compared to October 2012

- The above baseline graph compares the *rolling* 12 month total of crime in Radford and Park to a *fixed* 12 month 2010/11 baseline. The current 12 month total is showing a reduction of 5.8% against the baseline.
- In October 2013 there were 135 crimes which is a decrease of -8.78% (13 crimes from October 2012). The Division as a whole experienced a reduction in all crime of *approximately* -6.6%.
- Year to date crime in the ward has increased by 3.83% (32 crimes, April – October 2013 compared to April – October 2012, see Table 1 of page 5). In the Division as a whole, all crime is up by *approximately* 2.3%.
- The largest volume increase this month was in Drugs which was up 4 crimes (133.33%, see Table 1 of page 5).
- Crimes with a domestic flag assigned to them remained the same (15 crimes, October 2013 compared to October 2012, see Table 2 of page 5). For October 2013 the ward ranked 6th out of the 20 wards in the Division for this type of crime.
- The rate (per 1000 of population) of all crime in Radford and Park is slightly better than the average rate for the 20 wards (figures are year to date, see Table 3 of page 6). However, the ward suffered the 3rd largest rate of Burglary and Personal Robbery. 2

All ASB



Red		
Amber		
Green	83 fewer calls	-100%

Refers to October 2013 compared to October 2012

- The above baseline graph compares the *rolling* 12 month total of ASB in Radford and Park to a *fixed* 12 month 2010/11 baseline. The ward is currently showing a reduction of 19.38% against the baseline.
- In October 2013 there were 0 ASB calls in the ward. This is a reduction of -100% (83 fewer calls, see above right RAG rating) compared to October 2012. The Division as a whole experienced an increase of *approximately* 8.3% on this measure.
- Year to date ASB in the ward has reduced by -7.42% (38 calls, April – October 2013 compared to April – October 2012, see Table 5 of page 7). In the Division as a whole, ASB is down by *approximately* -4.7%.
- The rate (per 1000 of population) of ASB in Radford and Park is slightly worse than the average rate for the 20 wards (October 2013 figures, see Table 4 of page 7).

Crime Figures

Table 1: Crime Types by Month and Year to Date

RADFORD & PARK	Oct-12	Oct-13	Change	% Change	Prev YTD	YTD	Change	% Change
Autocrime	23	23	0	0.00%	172	107	-65	-37.79%
Burglary	14	9	-5	-35.71%	76	96	20	26.32%
Burglary Other	4	3	-1	-25.00%	27	44	17	62.96%
Damage	17	19	2	11.76%	109	84	-25	-22.94%
Drugs	3	7	4	133.33%	33	55	22	66.67%
Fraud	0	0	0	#DIV/0!	5	0	-5	-100.00%
Other	3	4	1	33.33%	18	20	2	11.11%
Personal Robbery	7	8	1	14.29%	16	33	17	106.25%
Robbery Business	0	0	0	#DIV/0!	1	0	-1	-100.00%
Sexual	2	0	-2	-100.00%	13	13	0	0.00%
Theft	44	38	-6	-13.64%	208	249	41	19.71%
Theft from Person	2	0	-2	-100.00%	11	14	3	27.27%
Threats	6	1	-5	-83.33%	20	21	1	5.00%
Violence	23	23	0	0.00%	127	132	5	3.94%
Total	148	135	-13	-8.78%	836	868	32	3.83%

Table 2: Crimes with a Domestic Flag Assigned to them by Month

Ward	Oct-12	Nov-12	Dec-12	Jan-13	Feb-13	Mar-13	Apr-13	May-13	Jun-13	Jul-13	Aug-13	Sep-13	Oct-13	Ward Rank (Oct-13)
RADFORD & PARK	15	8	7	6	10	9	6	11	13	8	8	5	15	6

Crime Figures

Table 3: Crime Types by Rate (per 1000 of population) of the 20 Wards – Figures are Year to Date 2013/14

WARD	ALL CRIME	AUTOCRIME	BURGLARY	DAMAGE	PERSONAL ROBBERY	THEFT	VIOLENCE
ARBORETUM	77.25	4.40	8.17	9.51	4.40	13.19	18.84
ASPLEY	54.02	4.99	4.09	8.74	0.68	8.74	13.85
BASFORD	44.86	5.43	4.13	8.02	0.99	8.58	9.81
BERRIDGE	49.38	5.58	4.50	7.18	0.97	11.85	10.35
BESTWOOD	36.83	2.27	4.00	7.82	0.84	4.78	8.95
BILBOROUGH	44.90	5.48	4.11	7.80	0.71	7.56	10.06
BRIDGE	49.22	2.87	1.54	5.43	0.92	19.58	9.13
BULWELL	69.32	4.33	4.08	14.24	1.55	17.39	13.55
BULWELL FOREST	40.62	2.50	2.94	7.42	1.10	11.16	8.23
CLIFTON NORTH	31.27	2.41	3.18	6.52	0.93	4.58	6.83
CLIFTON SOUTH	30.33	1.65	3.37	5.38	0.57	5.59	8.89
DALES	41.92	3.40	2.19	7.90	0.36	9.23	9.36
DUNKIRK AND LENTON	52.47	8.15	5.31	5.04	0.64	15.57	7.42
LEEN VALLEY	44.10	3.55	4.30	7.85	1.31	9.72	8.04
MAPPERLEY	43.80	5.62	3.41	5.93	0.50	8.39	8.33
RADFORD AND PARK	44.30	5.46	4.90	4.29	1.68	12.71	6.74
SHERWOOD	49.89	4.54	4.02	5.32	1.43	16.54	9.99
ST ANNS	53.55	3.94	2.86	10.09	3.15	5.44	14.68
WOLLATON EAST AND LENTON ABBEY	27.63	2.61	4.02	2.71	0.20	9.55	3.22
WOLLATON WEST	23.20	3.53	3.19	2.71	0.07	6.38	2.37
WARD AVERAGE	45.44	4.13	3.92	7.00	1.15	10.33	9.43

Highest Rate
 Second Highest Rate
 Third Highest Rate

All ASB Figures

Table 4: All ASB by Rate (per 1000 of population) of the 20 Wards

WARD	RATE (PER 1000 OF POP.) Oct 2013
ARBORETUM	7.81
ASPLEY	4.03
BASFORD	2.16
BERRIDGE	4.13
BESTWOOD	3.16
BILBOROUGH	3.75
BRIDGE	4.00
BULWELL	6.13
BULWELL FOREST	3.60
CLIFTON NORTH	2.17
CLIFTON SOUTH	3.01
DALES	2.98
DUNKIRK & LENTON	5.13
LEEN VALLEY	3.27
MAPPERLEY	2.40
RADFORD & PARK	5.00
SHERWOOD	1.62
ST ANNS	6.66
WOLLATON EAST & LENTON ABBEY	1.51
WOLLATON WEST	1.02
WARD AVERAGE	3.68

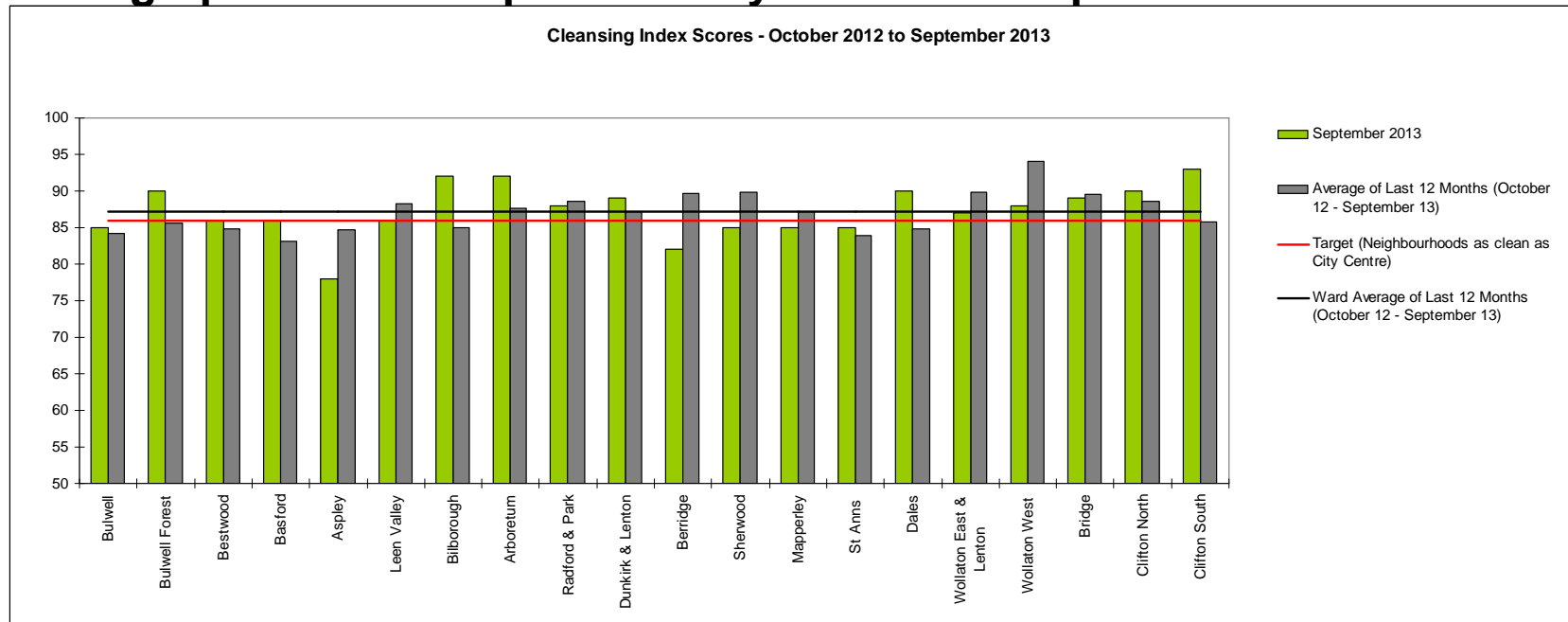
	Highest Rate
	Second Highest Rate
	Third Highest Rate

Table 5: All ASB by Month and Year to Date

Ward	Oct-12	Oct-13	Change	% Change	Prev YTD	YTD	Change	% Change
RADFORD & PARK	83	0	-83	-100.00%	512	474	-38	-7.42%

Cleanliness Index

This graph shows the position of your ward compared to other



The “neighbourhood as clean as the city centre” benchmark target on cleanliness is to achieve a score of 86% in every ward. The 86% target is shown in red in the above graph.

To calculate the Cleanliness Index (CI) an agreed number of transects are surveyed across an area covering a range of land types. Each site surveyed is awarded a cleanliness grade based on a 7 point scale from A to D where Grade A: – no litter, and Grade D: - heavily littered. The maximum possible score of 100 is achieved when all sites achieve Grade A.

The Code of Practice for Litter and Refuse (COPLAR) requires councils to strive to reach an ‘acceptable’ standard of cleanliness (grade B or better) across the Council area. Grade A is the ultimate goal and is how a site should be immediately after sweeping but is almost impossible to maintain for any length of time. For example, a grade A site is completely free of litter – one cigarette butt takes it down to B+.

To achieve the manifesto commitment of Neighbourhoods as clean as the City Centre a target of 86 is required as that was the CI for the City Centre in May 2011. To give some context if all areas surveyed achieved a grade ‘B’ standard, this would equate to a cleanliness index of 67.

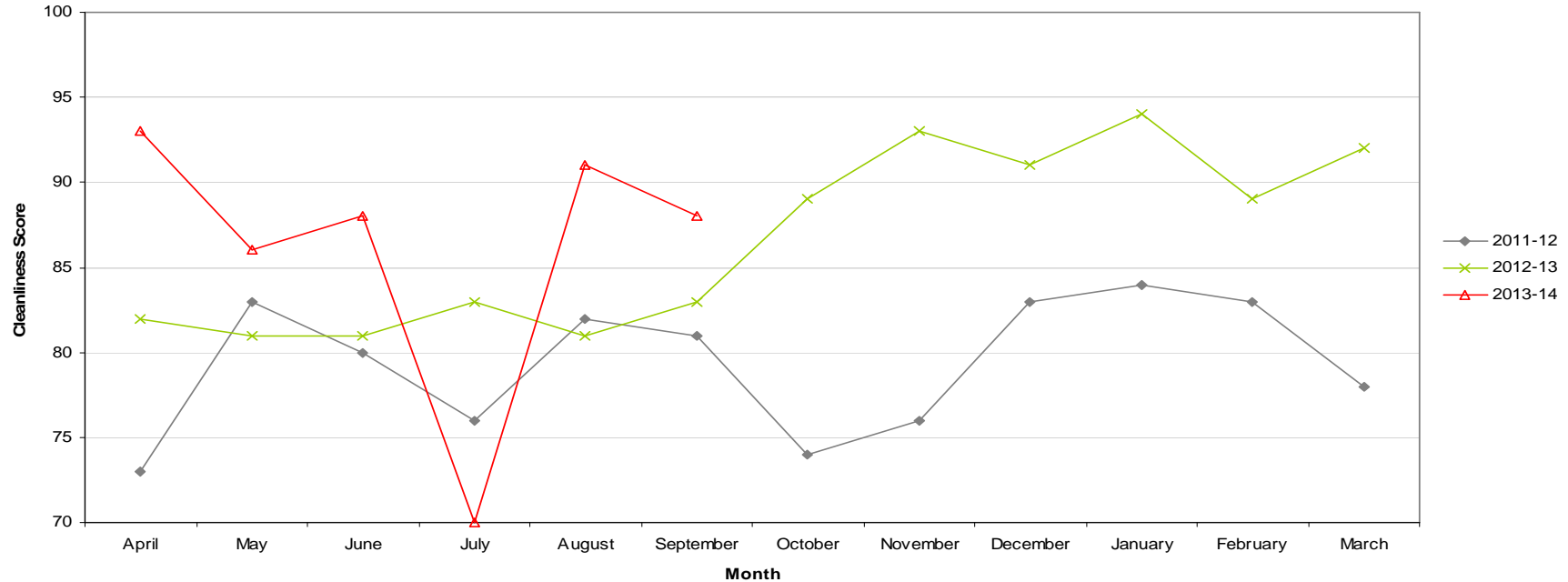
Cleanliness Figures provided by Neil Flaherty – Neighbourhood Services Directorate

Cleanliness Index

Cleanliness Index Score	88
Performance compared to previous year	↗
Performance compared to neighbourhoods target of 86	↗

- All data refers to a comparison with the previous year's month
- It is proposed that performance over time graphs be used for each indicator
- Historic data for comparison is not available for dog fouling

Cleanliness Index - Radford & Park

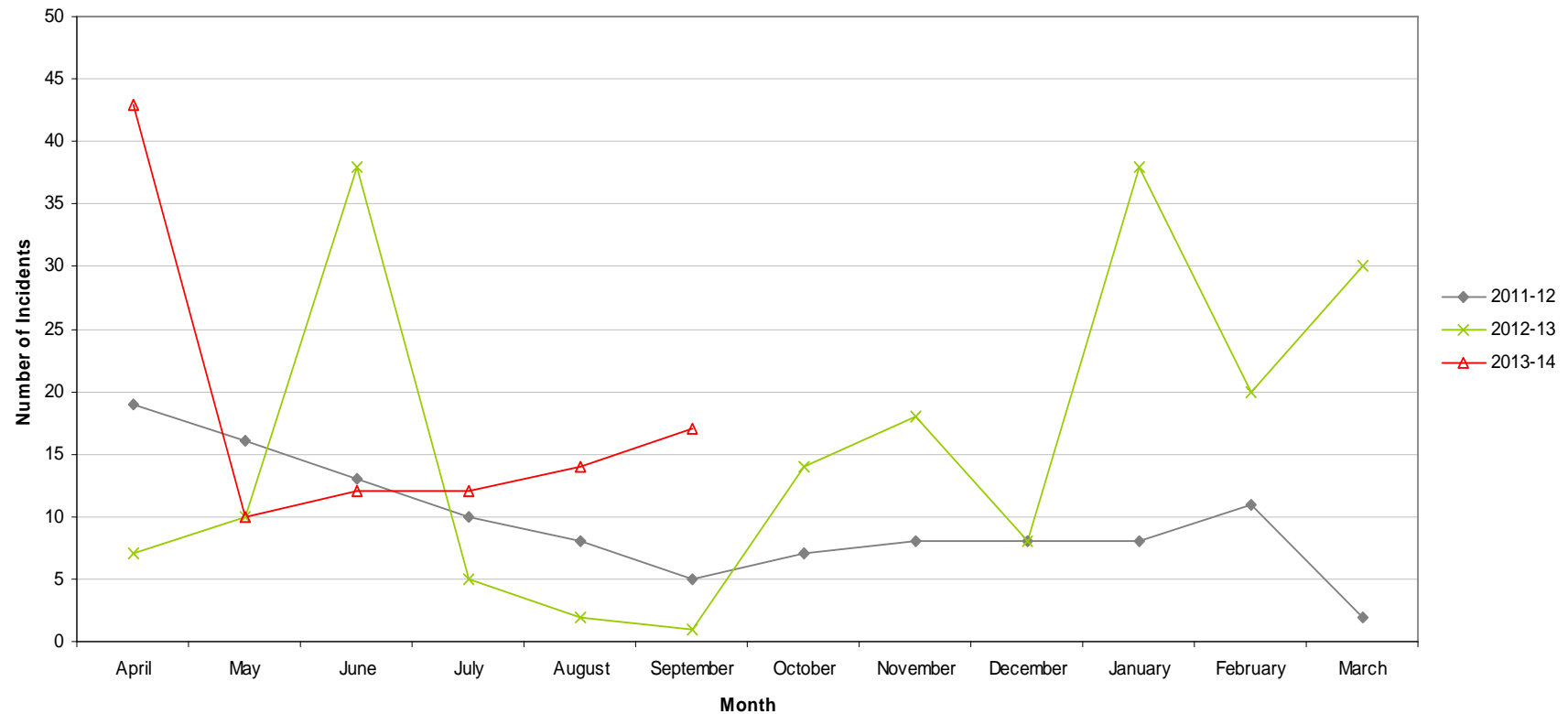


Graffiti Reports

RED	17 incidents	Increase of 16
AMBER		
GREEN		

- All data refers to a comparison with the previous year's month
- It is proposed that performance over time graphs be used for each indicator
- Historic data for comparison is not available for dog fouling

Incidents of Graffiti - Radford & Park

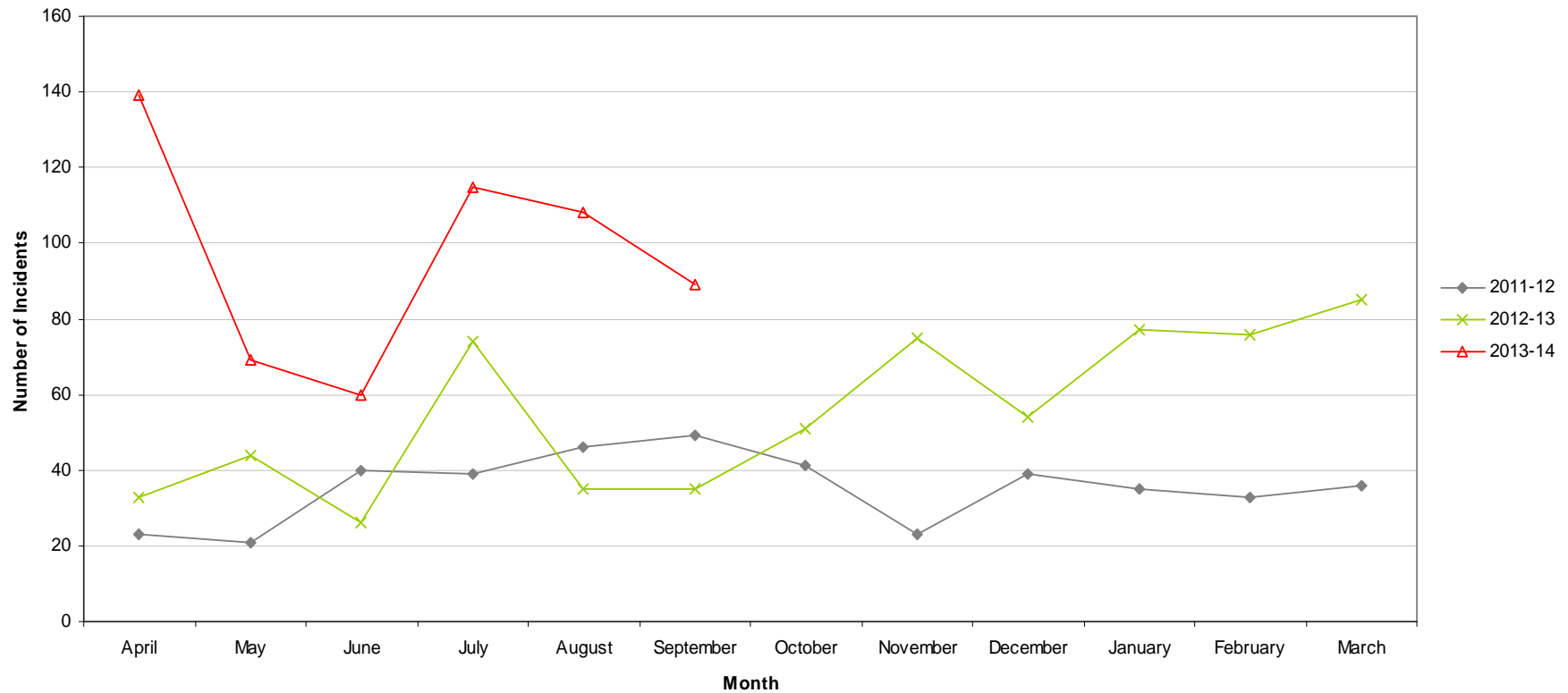


Fly Tipping

RED	89 incidents	Increase of 54
AMBER		
GREEN		

- All data refers to a comparison with the previous year's month
- It is proposed that performance over time graphs be used for each indicator
- Historic data for comparison is not available for dog fouling

Incidents of Fly Tipping - Radford & Park



Unemployment Rate

There are now 12,152 people in Nottingham City claiming Job Seeker's Allowance and 17,926 people in Greater Nottingham. Claimant numbers have fallen for the seventh month in a row and for nine of the last twelve months. This monthly fall is despite September usually seeing an increase in unemployment as school leavers join the workforce. Unemployment fell by 3.9% in the City in the last month and by 4.6% in Greater Nottingham. The national average was a 4.2% fall and the East Midlands figure fell by 5.2%

Area	Sep-13			Change in last month		Change in last year	
	Number	Rate	City Rank	Number	%	Number	%
Arboretum	805	6.8	5	-12	-1.5	-16	-1.9
Aspley	1,045	9.2	1	-24	-2.2	-129	-11
Basford	650	5.8	9	-39	-5.7	-53	-7.5
Berridge	973	6.7	6	-35	-3.5	-90	-8.5
Bestwood	862	7.6	4	-31	-3.5	-131	-13.2
Billborough	660	6.3	8	-18	-2.7	-122	-15.6
Bridge	607	5.8	9	-6	-1	-113	-15.7
Bulwell	908	8.3	2	-55	-5.7	-121	-11.8
Bulwell Forest	381	4.2	14	-32	-7.7	-54	-12.4
Clifton North	367	4.1	16	-19	-4.9	-27	-6.9
Clifton South	461	5.3	12	-32	-6.5	-30	-6.1
Dales	751	6.4	7	-61	-7.5	-126	-14.4
Dunkirk and Lenton	198	1.8	19	-6	-2.9	-71	-26.4
Leen Valley	291	4.2	14	9	3.2	-58	-16.6
Mapperley	627	5.6	11	2	0.3	-75	-10.7
Radford and Park	685	3.6	17	-40	-5.5	-81	-10.6
Sherwood	488	4.5	13	-15	-3	-76	-13.5
St Ann's	1,087	7.9	3	-75	-6.5	-147	-11.9
Wollaton East and Le	123	1.2	20	-4	-3.1	-9	-6.8
Wollaton West	183	2	18	-6	-3.2	-88	-32.5

This is an edited version of a report produced by: Geoff Oxendale, Information and Research Officer, Nottingham City Council. Claimant count of Job Seekers Allowance (JSA) is used as a proxy measure for unemployment.

Wards are ranked from 1 (highest Rate, per 1000 of population, of JSA claimants) to 20 (lowest Rate).

Housing

Ward Report - Radford & Park







RPWA1 Anti-social behaviour



Performance indicator and definition	Current Target	2013/14			2012/13	2011/12
		Value	Status	Long Trend	Value	Value
% of ASB cases resolved by first intervention – Radford <i>Note: This PI monitors how many ASB cases NCH resolved on the first intervention e.g. written warning. Data for this indicator is not available by ward and is reported by Housing Office.</i>	75%	84%			78.92%	
% of ASB cases resolved – Radford <i>Note: This PI measures the proportion of ASB cases NCH has successfully resolved. Data for this PI is not available by ward and is reported by Housing Office.</i>	97.6%	100%			100%	97.53%
Number of new ASB cases – Radford <i>Note: Data for this PI is only available by Housing Office.</i>		50			144	229

Housing

RPWA2 Repairs







Performance indicator and definition	Current Target	2013/14			2012/13	2011/12
		Value	Status	Long Trend	Value	Value
% of repairs completed in target – Radford & Park Ward <i>Note: This PI monitors the proportion of repairs being completed within agreed timescales.</i>	96%	98.26%			94.87%	96.59%
Tenant satisfaction with the repairs service <i>Note: Data for this PI is only available citywide</i>	8.8	8.59			8.64	8.65

RPWA3 Rent Collection



Performance indicator and definition	Current Target	2013/14			2012/13	2011/12
		Value	Status	Long Trend	Value	Value
% of rent collected – Radford <i>Note: This PI measures the amount of rent collected (including tenant arrears) as a percentage of rent due for the current year. Data for this</i>	100%	97.4%			100.5%	100.6%

Housing

RPWA4 Empty properties

Performance indicator and definition	Current Target	2013/14			2012/13	2011/12
		Value	Status	Long Trend	Value	Value
Average void re-let time (calendar days) – Radford & Park Ward <i>Note: This PI measures how long it takes NCH to re-let empty properties from the end of the old tenancy to the start of the new tenancy.</i>	25	8.45			29.62	23.81
Number of empty properties awaiting decommission – Radford & Park ward <i>Note: This PI shows the number of empty properties which will not be re-let and includes those being decommissioned and / or demolished.</i>		46			54	112
Number of lettable voids – Radford & Park Ward <i>Note: Lettable voids are empty properties available for re-letting. They will receive repair work and then be re-let to a new tenant.</i>		21			19	7

RPWA5 Tenancy sustainment

Performance indicator and definition	Current Target	2013/14			2012/13	2011/12
		Value	Status	Long Trend	Value	Value
Percentage of new tenancies sustained - Radford & Park Ward (2003)	93%	93.55%			94.19%	

Housing

Map of Tenants and Residents Associations by Ward

Key:



Performance on or exceeding target



Performance below target



Data only performance indicator



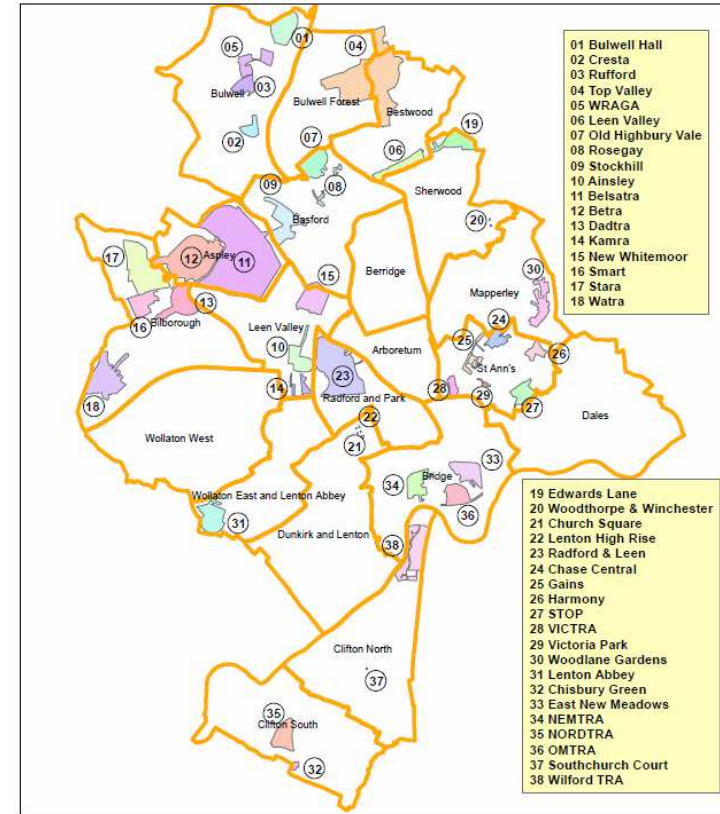
Performance has improved compared to two years ago



Performance has deteriorated compared to two years ago



Performance unchanged



Data prepared by Nottingham City Homes Performance Team

For more information please contact Tricia Quinn, Performance Manager on 0115 9157365 or Marcus Parton, Performance Analyst 0115 915715

Housing

Performance indicator definitions

Performance indicator	Definition
% of ASB cases resolved	This performance indicator monitors the proportion of ASB cases that Nottingham City Homes has successfully resolved. Data for this indicator is not available by ward and is reported by Housing Office.
% of ASB cases resolved by first intervention	This performance indicator monitors how many ASB cases Nottingham City Homes resolved on the first intervention e.g. written warning. Data for this indicator is not available by ward and is reported by Housing Office.
Average void re-let time (calendar days)	This performance indicator monitors how many empty properties Nottingham City Homes has re-let and the length of time it has taken. The void period is the number of calendar days including the day after the old tenancy ends right through to and including the day before the new tenancy starts.
Number of lettable voids	This performance indicator monitors the number of empty properties which are available for re-letting. Lettable empty properties are those which will receive repair work and then be let to a new tenant.
Number of empty properties awaiting decommission	This performance indicator monitors the number of empty properties which will not be re-let and includes those being decommissioned and / or demolished.
Estate star ratings	Nottingham City Homes Tenant Inspectors monitor the condition of estates and rates them according to a zero, one, two and three star standard. The estates are monitored every three months with a selection of streets (determined by tenants) covering all 42 estates.
Rent charged that has been collected	This performance indicator measures the amount of rent collected (including tenant arrears) as a percentage of rent due for the current year. Data for this indicator is not available by ward and is reported by Housing Office.

Community Protection

Data has been received from Community Protection and where postcodes have been listed these have been geo-coded and mapped to determine the Ward. All addresses relate to the address of the Perpetrator.

FPNs are not currently available at ward level.

In October 2013 there were the following court outcomes:

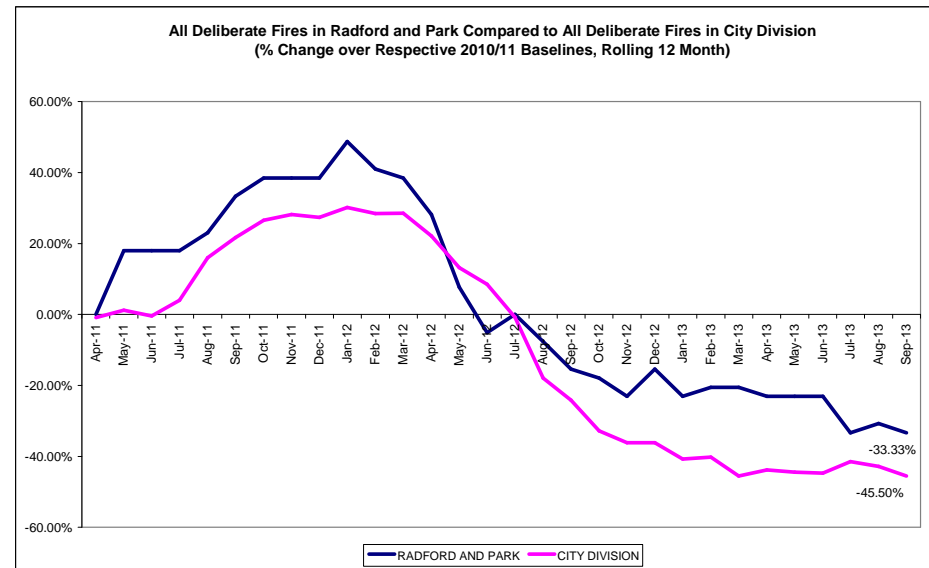
2 Statutory Notices for Environment.

For enquiries regarding Community Protection court outcomes please contact the Operational Manager for the locality.

Fire

Table: Volume of Deliberate Primary and Secondary Fires by Ward

Ward	Sep-12	Sep-13	Change	% Change	Previous YTD	YTD	Change	% Change
Arboretum	1	1	0	0.00%	10	17	7	70.00%
Aspley	9	1	-8	-88.89%	37	32	-5	-13.51%
Basford	4	4	0	0.00%	31	21	-10	-32.26%
Berridge	6	3	-3	-50.00%	26	23	-3	-11.54%
Bestwood	6	4	-2	-33.33%	23	36	13	56.52%
Bilborough	4	6	2	50.00%	24	14	-10	-41.67%
Bridge	1	2	1	100.00%	9	12	3	33.33%
Bulwell	14	7	-7	-50.00%	47	42	-5	-10.64%
Bulwell Forest	9	2	-7	-77.78%	25	10	-15	-60.00%
Clifton North	0	0	0		4	6	2	50.00%
Clifton South	1	4	3	300.00%	14	22	8	57.14%
Dales	2	1	-1	-50.00%	5	11	6	120.00%
Dunkirk and Lenton	0	1	1		3	5	2	66.67%
Leen Valley	4	2	-2	-50.00%	17	18	1	5.88%
Mapperley	2	0	-2	-100.00%	11	9	-2	-18.18%
Radford and Park	4	3	-1	-25.00%	18	13	-5	-27.78%
Sherwood	2	4	2	100.00%	7	12	5	71.43%
St. Anns	5	2	-3	-60.00%	17	21	4	23.53%
Wollaton East and Lenton Abbey	0	0	0		0	1	1	
Wollaton West	0	0	0		0	0	0	
Total	74	47	-27	-36.49%	328	325	-3	-0.91%



•The above table shows volume of deliberate (primary and secondary) fires in the 20 wards. In September 2013 there were 3 fires in Radford and Park. Year to date deliberate fires in the ward are down by 5 (28%).

•The graph on the right shows a *rolling* 12 month total of deliberate fires in Radford and Park against the *fixed* 2010/11 baseline. The performance of the City Division against *its* baseline has also been shown for comparison purposes.

Note: Where ward boundaries overlap with the City Centre fires that occurred in the City Centre have been **included** in the ward figures.

Methodology

Data has not been audited or verified and therefore must only be used as a reflection of crime.

Crime data and ASB calls have been extracted from the Police systems and mapped to ascertain which Ward they occurred in.

Where a ward boundary overlaps with the City Centre, crime data and ASB calls relating to the City Centre have been removed.

Where possible the most recent data is used, although for some areas this may be a month further in arrears.

Discussions continue with other agencies regarding what further data can be included.